

ITAS SPEEDFLAME MODEL SF-10-MV

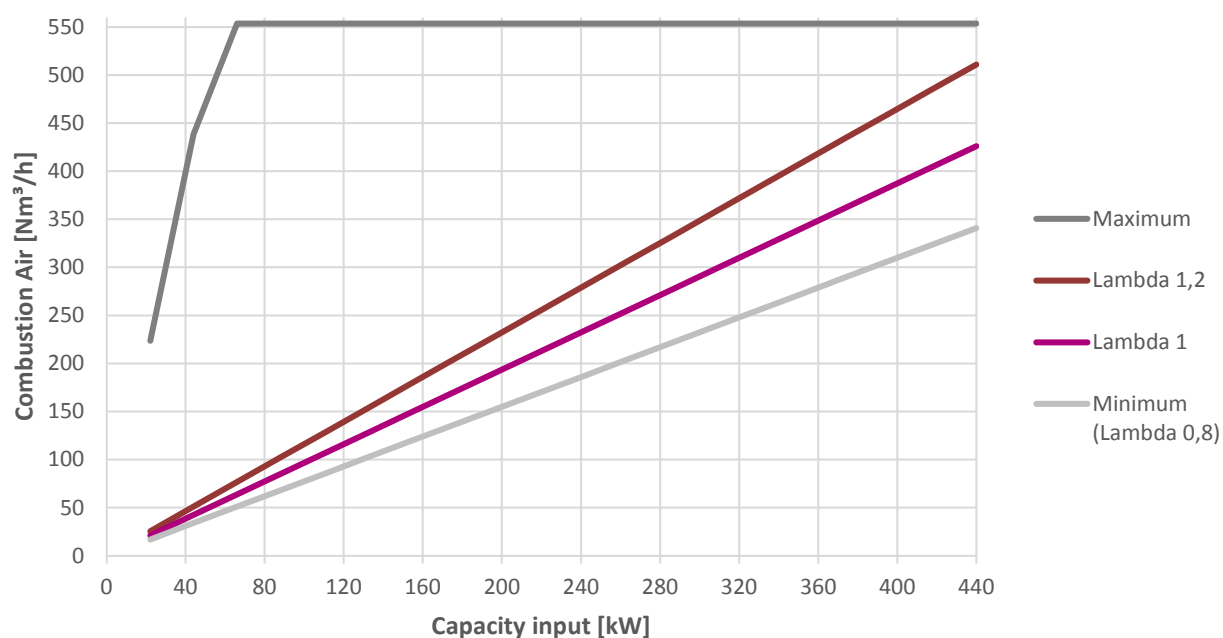
TECHNICAL DATASHEET (METRIC)

Parameter	Value
Maximum Capacity input [kWlhv]	440
Minimum input – on ratio controlled [kWlhv]	22
Minimum input – gas controlled (fixed air) [kWlhv]	44
Fuels	Natural gas, propane (Contact Fives ITAS for using other gases or mixed gases)
Required fuel pressure at gas inlet [mbar] (at maximum capacity, see page 4, Tap A)	Natural gas-Italian: 43 Natural gas – Russian: 36,4 Propane: on request
Maximum combustion air flow [Nm ³ /h]	554
Required air pressure at maximum flow [mbar] (see page 4, Tap C)	63
Combustion air temperature [°C]	< 150
Flame dimensions [mm] (Measured from outlet of combustor)	Length 1400 Diameter 150
Combustor options	Silicon Carbide Refractory
Flame velocity at combustor outlet [m/s]	Up to 70
Maximum chamber temperature [°C]	SiC combustor: 1200 Refractory combustor: 1200
Ignition	Via bypass in gas line
Ignition capacity [kW]	8
Flame Monitoring	UV scanner or Infrared scanner
Emissions	On request
Installation position	Horizontal Vertical up Vertical down (use a continuous fan operation)
Weight [kg]	Burner with SiC: 20 Burner with refractory: ~45

Notes:

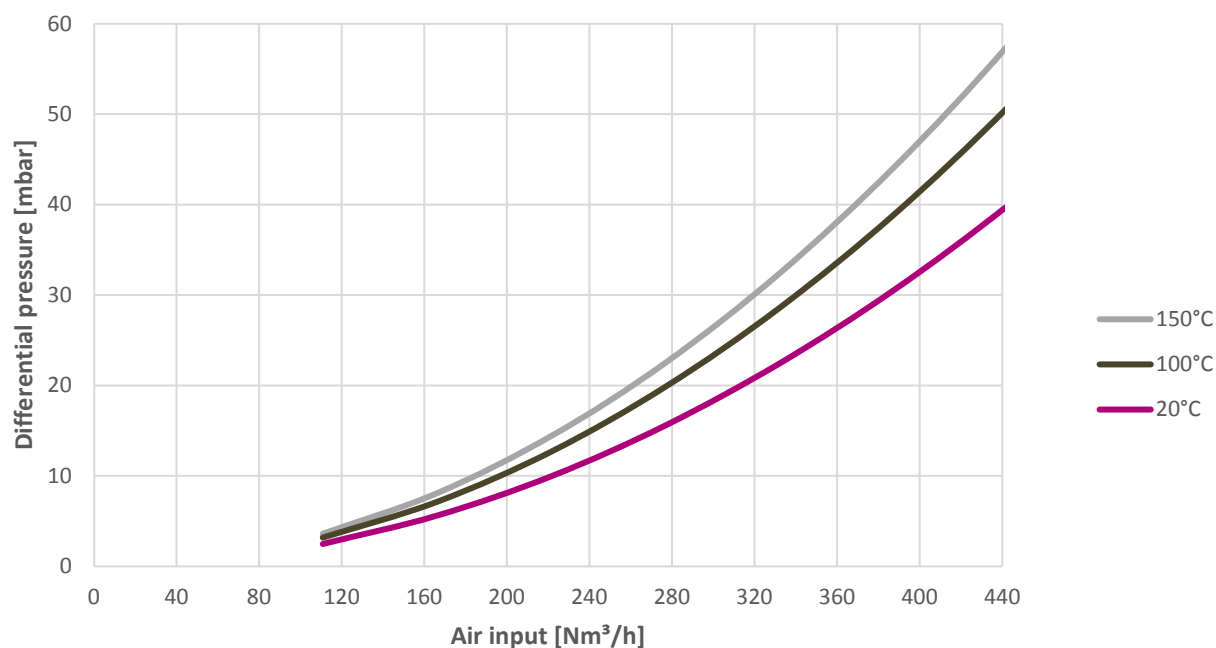
- All data are based on net calorific values = lhv
- All information is based on common practice for gas and air pipe design.
Contact Fives ITAS S.p.A. if you need further support
- All inputs are based on laboratory testing at neutral chamber conditions
- Natural gas Italian: lhv = 9,5 kWh/Nm³; d=0,6
- Natural gas Russian: lhv = 9,97 kWh/Nm³; d=0,56
- Propane: lhv 26,3 kWh/Nm³; d=1,58

1. OPERATION CURVE



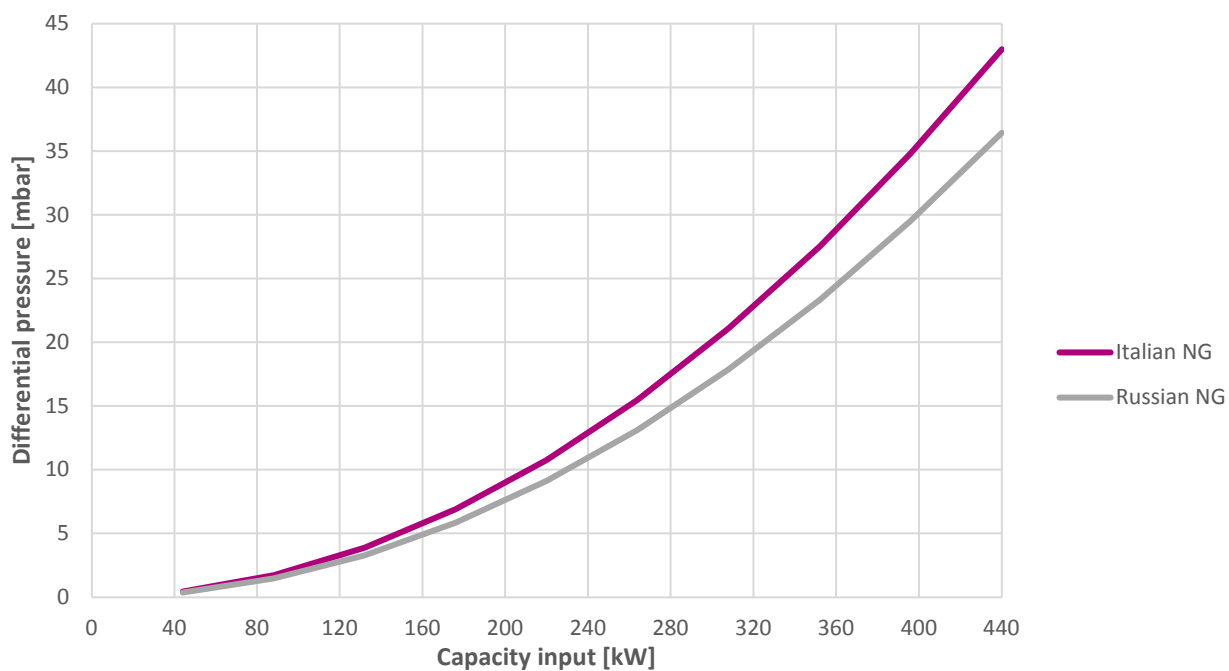
2. COMBUSTION AIR PRESSURE DROP

Pressure drop shall be taken between pressure Tap B and C



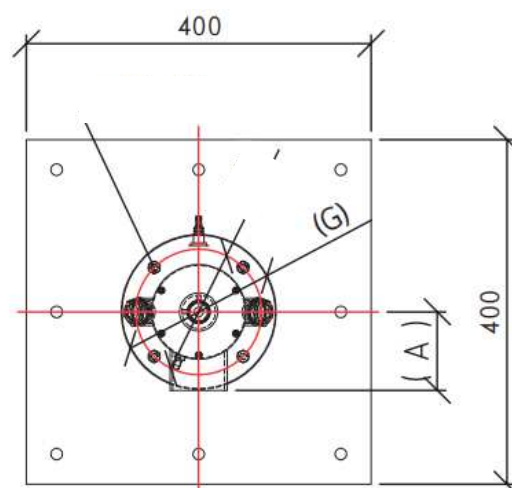
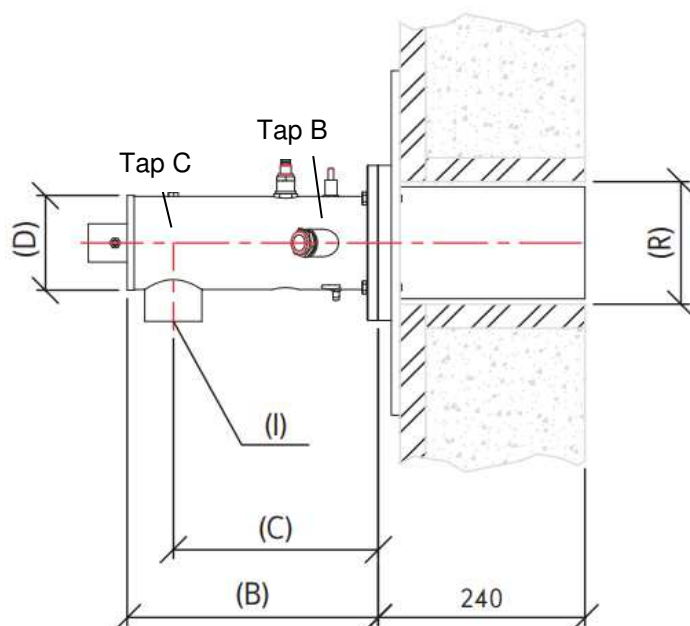
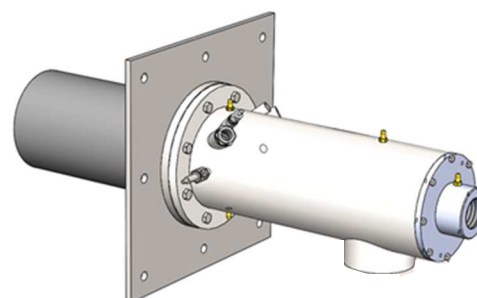
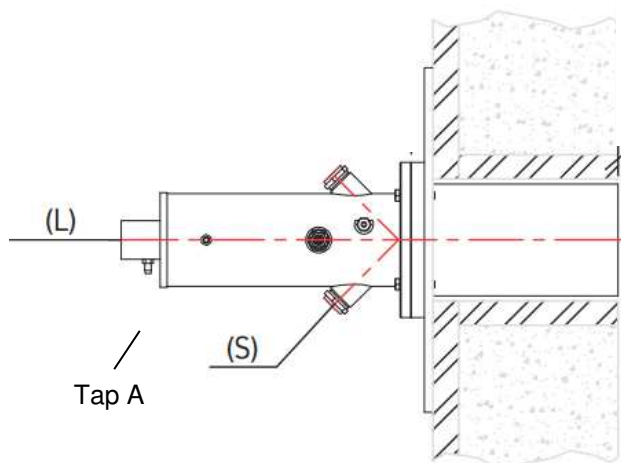
3. GAS PRESSURE DROP

Pressure drop shall be taken as differential between pressure Tap A and B



Note: Pressure drop curves shall be used as a guide for setting up burner. It is recommended to use fuel flow measurements for determining actual fuel flows.

4. DIMENSIONS



SF-10-MV dimensions

A	91 mm
B	335 mm
C	238 mm
D	110 mm
G	180 mm
I	2" Air inlet
L	1" Gas inlet
R	130 mm SiC outer diameter
S	3/4" UV port