

ITAS DRYFLAME MODEL DF0500

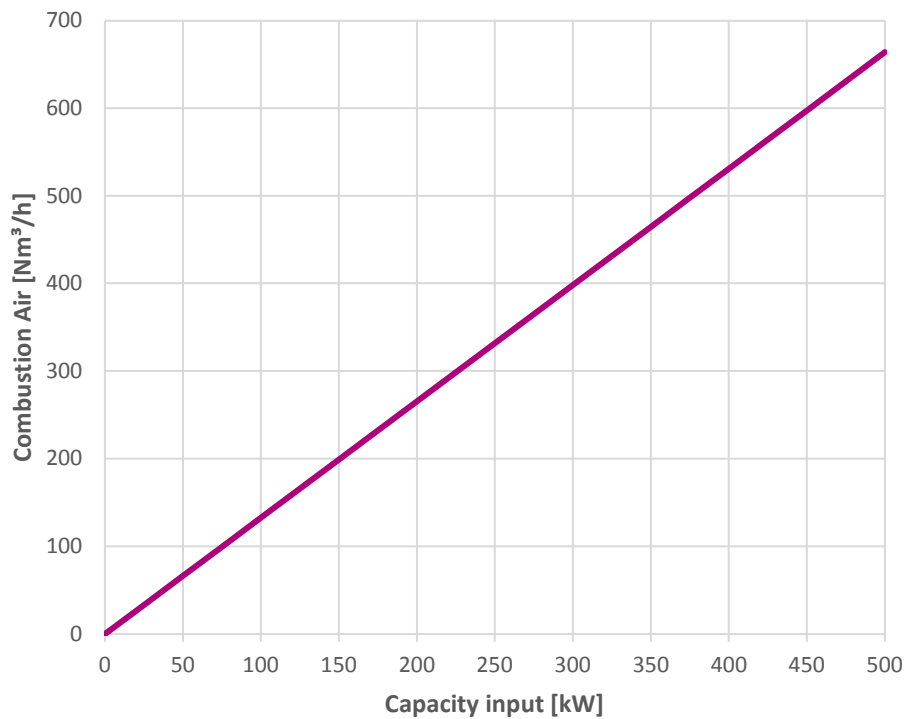
TECHNICAL DATASHEET (METRIC)

Parameter	Value
Maximum Capacity input [kW _{l_hv}]	500
Minimum Capacity input [kW _{l_hv}]	10
Gas pressure [mbar] (At burner inlet - see page 4)	Natural gas: 50
Gas differential pressure over burner [mbar] (between Tap "A" and chamber – see page 3)	Natural gas: 30,1
Lambda	1,2
Air pressure [mbar] (At burner inlet – see page 4)	10
Air differential pressure [mbar] (Between Tap "B" and chamber - see page 3)	Natural gas: 7.2
Fuels	Natural Gas Contact Fives ITAS S.p.A. for other fuels
Flame dimensions [mm] (Measured from outlet of combustor)	Length: 900 Diameter: 200
Combustion air temperature [°C] (Higher temperatures on request)	< 50
Ignition	Direct ignition by spark rod Ignited by internal pilot optional
Flame Monitoring	Flame rod or UV scanner
Maximum chamber temp. with alloy tube [°C]	900
Installation position	Horizontal Vertical down (use a continuous fan operation)
Weight [kg]	22

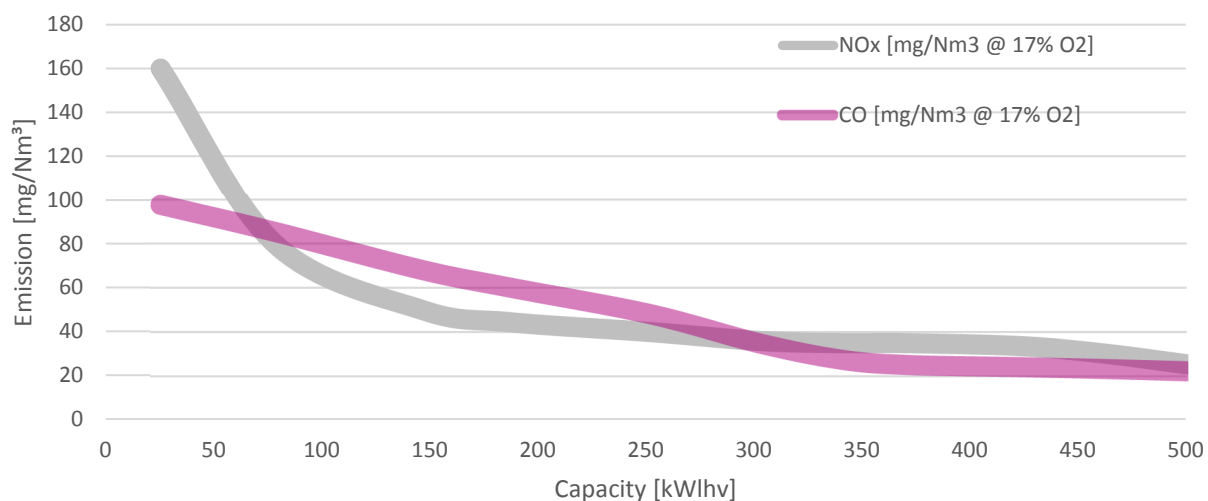
Notes:

- All data are based on net calorific values = l_hv
- All information is based on common practice for gas and air pipe design.
Contact Fives ITAS S.p.A. for any further support.
- All inputs are based on laboratory testing at neutral chamber conditions
- Natural gas: l_hv = 9,97 kWh/Nm³; d=0,56
- Propane: l_hv = 26,3 kWh/Nm³; d=1,58

1. OPERATION CURVE



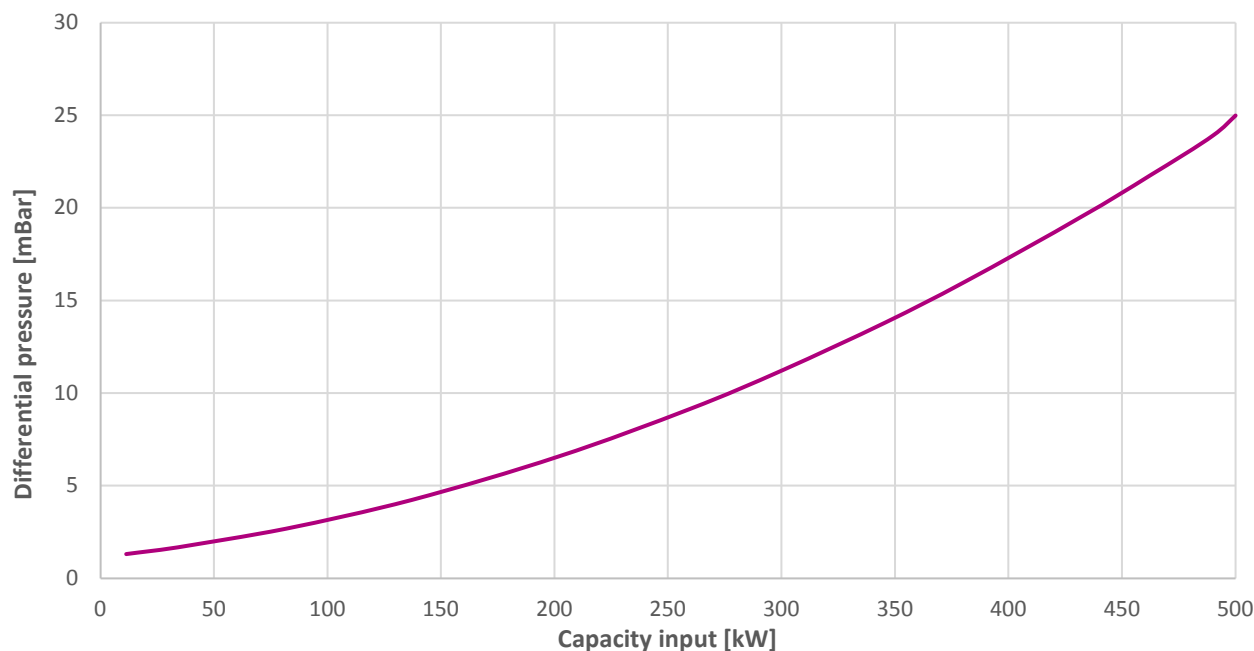
2. ESTIMATED EMISSION OUTPUT



Emission levels provided are estimated outputs from the burner at the following conditions:

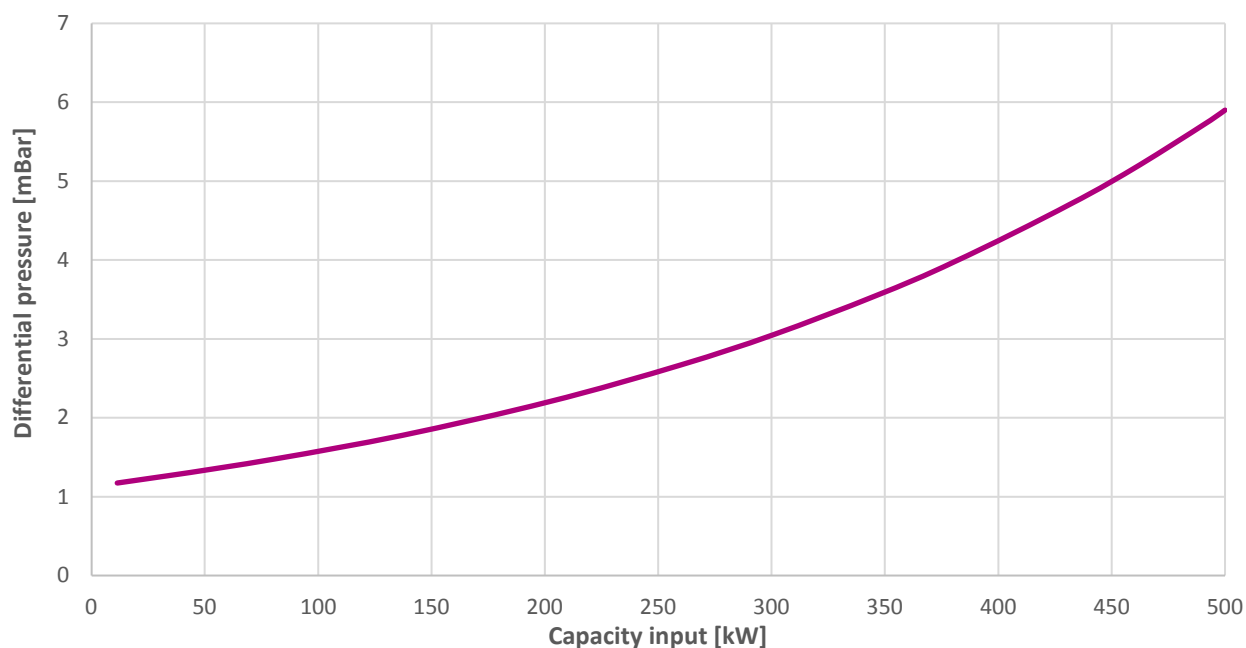
- Natural gas
- Measured at 17% O₂
- Neutral chamber conditions;
- Ambient combustion air (15 °C)

3. GAS DP - BETWEEN TAP “A” AND CHAMBER



4. AIR DP - BETWEEN TAP “B” AND CHAMBER

Operating Natural gas*



*dP's are given for Ambient combustion air (15°C)

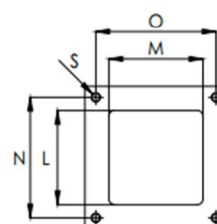
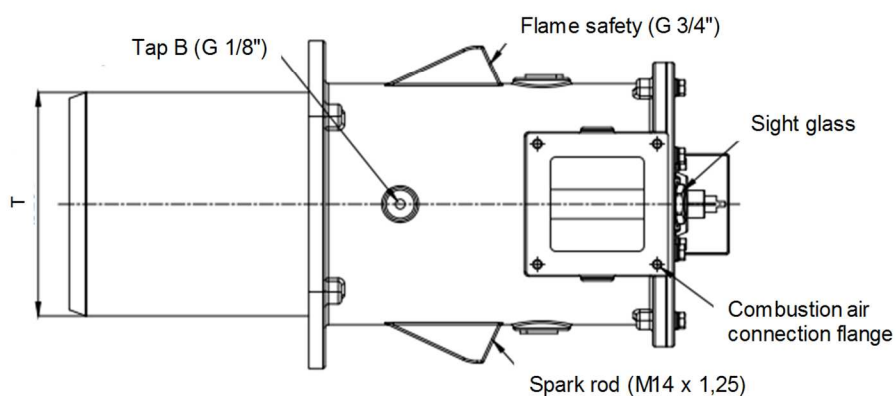
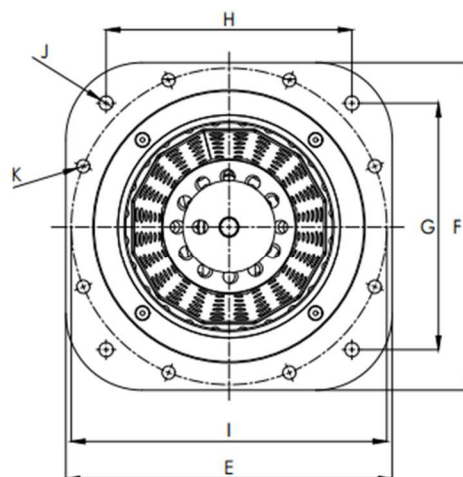
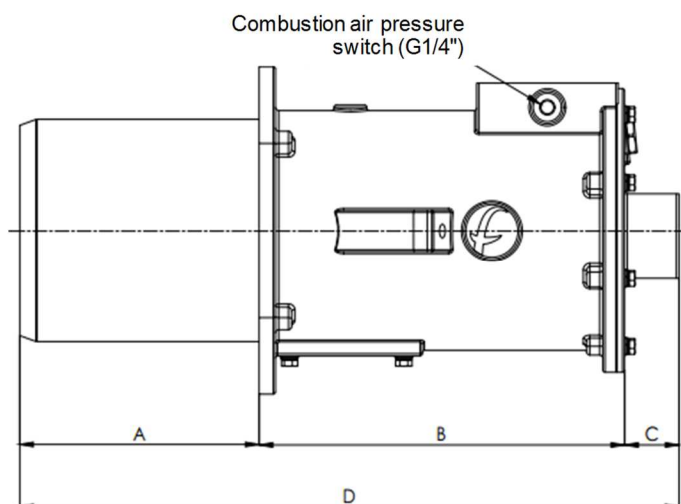
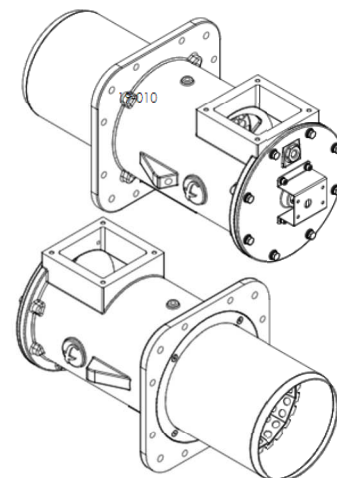
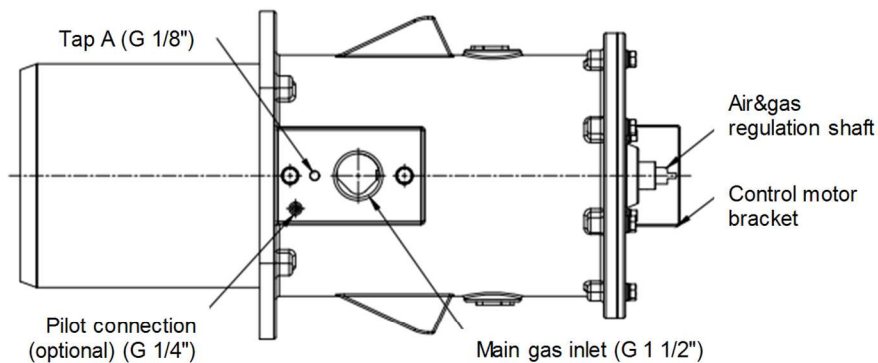
3/4

The information provided on this brochure is for information purposes only and does not constitute any legal obligation or a warranty, expressed or implied, concerning quality, marketability or suitability for a specific purpose.



fives
Industry can do it

5. DIMENSIONS



Pos.	[mm]
A	220
B	336
C	50
D	606
E	300
F	300

Pos.	[mm]
G	226
H	226
I	290
J	13
K	12
L	86

Pos.	[mm]
M	86
N	110
O	110
S	M8
T	204

4/4

The information provided on this brochure is for information purposes only and does not constitute any legal obligation or a warranty, expressed or implied, concerning quality, marketability or suitability for a specific purpose.

May 2020